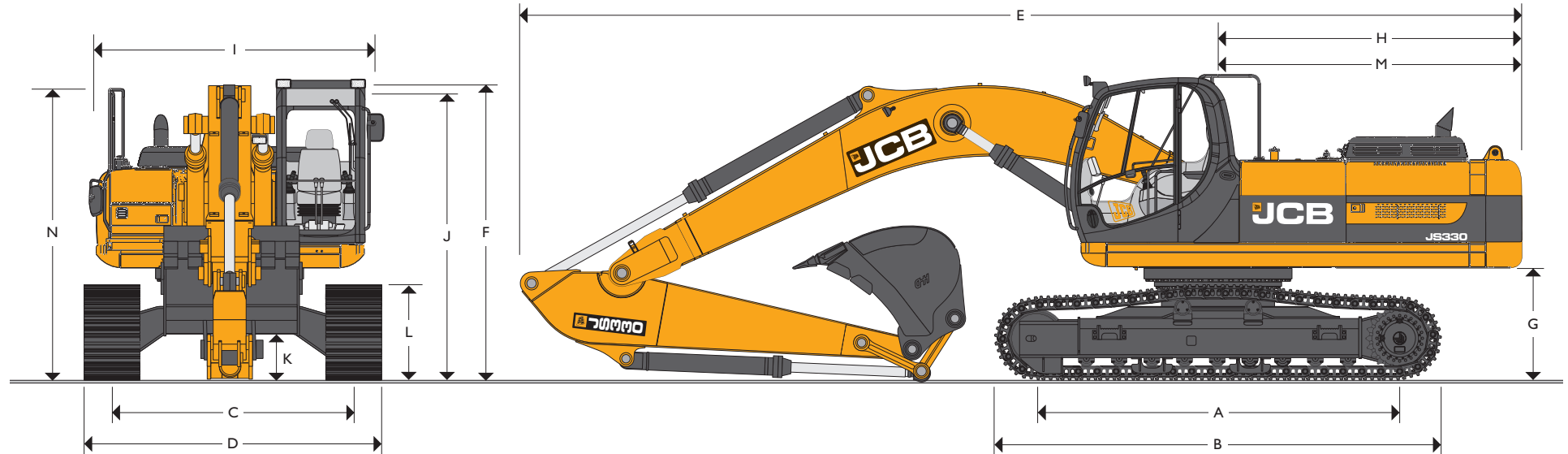




MAX. OPERATING WEIGHT: 33288 kg (73387 lb) ENGINE POWER: 178 kW (239 hp)



STATIC DIMENSIONS

Dimensions in millimetres (ft-in)	LC	NLC
A Track length on ground	3910 (12-10)	3910 (12-10)
B Undercarriage overall length	4810 (15-9)	4810 (15-9)
C Track gauge	2600 (8-6)	2390 (7-6)
D Width over tracks (600mm trackshoes)	3200 (10-6)	2990 (9-6)
D Width over tracks (700mm trackshoes)	3300 (10-10)	3090 (10-10)
D Width over tracks (800mm trackshoes)	3400 (11-2)	3190 (12-6)
D Width over tracks (900mm trackshoes)	3500 (11-6)	3290 (10-10)

Standard Boom 6.45m (21ft 2in)				
Dipper lengths	2.21m (7ft 3in)	2.63m (8ft 8in)	3.23m (10ft 7in)	4.03m (13ft 3in)
Dimensions in millimetres (ft-in)				
E Transport length – L	11070 (36-4)	10980 (36-0)	10880 (35-8)	10970 (36-0)
E Transport length – NL	11070 (36-4)	10980 (36-0)	10880 (35-8)	10870 (36-0)
F Transport height – L	3610 (11-10)	3570 (11-9)	3360 (11-3)	3850 (12-8)
F Transport height – NL	3610 (11-10)	3570 (11-9)	3360 (11-3)	3850 (12-8)

ME Boom 6.10m (20ft 0in)		
Dipper lengths	2.21m (7ft 3in)	2.63m (8ft 8in)
Dimensions in millimetres (ft-in)		
E Transport length – L	10720 (35-2)	10630 (34-11)
E Transport length – NL	10720 (35-2)	10630 (34-11)
F Transport height – L	3610 (11-10)	3570 (11-9)
F Transport height – NL	3610 (11-10)	3570 (11-9)
Dimensions in millimetres (ft-in)	LC	NLC
G Counterweight clearance	1190 (3-11)	1190 (3-11)
H Tail swing radius	3280 (10-9)	3280 (10-9)
I Overall width of superstructure	2990 (9-10)	2990 (9-10)
J Height over cab	3170 (10-5)	3170 (10-5)
K Ground clearance	500 (1-7)	500 (1-7)
L Track height	1026 (3-4)	1026 (3-4)
M Tail length	3250 (10-8)	3250 (10-8)
N Height over grab rail	3196 (10-6)	3196 (10-6)



ENGINE

Model	Isuzu AH – 6HK1X Tier II.
Type	Water cooled, 4-stroke, 6-cylinder in-line, common rail direct injection, turbocharged and intercooled diesel.
Rated power (ISO 14988 (SAE J1995))	178kW (239hp) at 1900rpm.
Gross power	187kW (251hp) at 1900rpm.
Piston displacement	7.8 litres (475 cu.in.)
Bore/stroke	115mm x 125mm (4.5in. x 4.9in.)
Air filtration	Dry element with secondary safety element and in-cab warning indicator.
Starting system	24 volt.
Batteries	2 x 12 volt.
Alternator	24V, 50 ampere.

SWING SYSTEM

Swing motor	Axial piston type.
Swing brake	Hydraulic braking plus automatic spring applied disc type parking brake.
Final drive	Planetary reduction.
Swing speed	9.5 rpm
Swing gear	Large diameter, internally toothed fully sealed grease bath lubricated.
Swing lock	Multi position switchable brake.

UNDERCARRIAGE

Carriage options	L-Long Carriage and NL-Narrow Long Carriage.
Construction	Fully welded, 'X' frame type with central bellyguarding and sloping sidemembers with dirt relief holes under top rollers.
Recovery point	Front and rear.
Track shoe options	600mm (24in), 700mm (28in), 800mm (32in), 900mm (34in).
Upper & lower rollers	Heat treated, sealed and lubricated.
Track adjustment	Grease cylinder type.
Track idler	Sealed and lubricated, with spring cushioned recoil.
Track type	Sealed and lubricated.
NL & L	
No. of track guides	2 per side
No. of lower rollers	9 per side
No. of upper rollers	2 per side
No. of track shoes	50 per side

EXCAVATOR END

Monoboom is standard on the JS330 along with a choice of dipper lengths to suit the requirements of reach, dig-depth, loadover height and tearouts. Reserve strength is built into the fully welded structures for hydraulic hammer and other arduous operations. Fabricated bucket tipping links are provided with a choice of lift points.

STANDARD / OPTIONAL EQUIPMENT

Standard Equipment: Engine fan guard; Cold start pre-heat; Auto engine warm up; Double element air cleaner; Electric refuelling pump; Heavy-duty alternator; Electrics isolator; Heavy-duty batteries; Cab & engine soundproofing; Cab heater & screen demister; Tinted glass; Interior light; Coat hook; Cigarette lighter; Ashtray; Air conditioning; Operator's storage box; Removable floor mat; Windscreen wash/wipe; Plug-in power socket; Automatic power boost; Auto-idle; One-touch engine speed control; Hydraulic cushion control; Boom/swing priority switch; Plexus hydraulic oil filtration; HSP pressure test points; Auxiliary pipework mounting brackets; Work lights – boom & mainframe mounted; Undercarriage belly guarding; Upper structure under covers; Swing system cover; Twin track guides; External mirrors; Handrail & non slip walk ways; Quick connect engine oil drain pipe; Front screen blind; Quick connect fuel tank drain pipe; Hinged engine under cover.

Optional Equipment: Hose burst check valves & overload warning system; Tipping link mounted lift points; General purpose buckets; Ditch/grading buckets; Quickhitch buckets; Hydraulic hammers; Auxiliary pipework (full and low flow); Cab mounted & rear work lights; Rotating beacon; Rain guard; Biodegradable oil; Air suspension seat with heated pad and lumbar support adjustment; lower screen wiper; Radio & cassette player; Cab protection guarding (FOPS level II).

STANDARD EQUIPMENT FOR XTRA DUTY BUILDS

Cab cage (FOPS level II); Visibowl pre-cleaner; Reinforced dipper; Reinforced bucket links; Impact buffer around upper structure; Heavy-duty 10mm underguards and trackmotor covers; Reinforced front light protection.



HYDRAULIC SYSTEM

A variable flow load sensing system with flow on demand, variable power output and servo operated, multi-function open centre control.

Pumps

Main pumps	2 variable displacement axial piston type.
Maximum flow	2 x 290 L/min (2 x 64 UK GPM).
Servo pump	Gear type.
Maximum flow	30 L/min (6.6 UK GPM).

Control valve

A combined four and five spool control valve with auxiliary service spool as standard. When required twin pump flow is combined to boom, dipper and bucket services for greater speed and efficiency.

Relief valve settings

Boom/Arm/Bucket	319 bar (4627lb/sq.in)
With power boost	348 bar (5047lb/sq.in)
Swing circuit	280 bar (4061 lb/sq.in)
Travel circuit	325 bar (4712lb/sq.in)
Pilot control	45 bar (652lb/sq.in)

Hydraulic cylinders

Double acting type, with bolt-up end caps and hardened steel bearing bushes. End cushioning is fitted as standard on boom, dipper and bucket rams.

Filtration

The hydraulic components are protected by the highest standard of filtration to ensure long hydraulic fluid and component life.

In tank	150 micron, suction strainer.
Main return line	10 micron, fibreform element.
Plexus bypass line	1.5 micron, paper element.
Pilot line	10 micron, paper element.
Hydraulic hammer return	10 micron, reinforced microform element.

Cooling

Worldwide cooling is provided via a single faced full return line air blast cooler with anti-block wavy cooling fins and separate easy clean fine mesh grill.

TRACK DRIVE

Type	Fully hydrostatic, three speed with autoshift.
Travel motors	Variable swash axial piston type, fully guarded within undercarriage frame.
Final drive	Planetary reduction, bolt-on sprockets.
Service brake	Hydraulic counter balance valve to prevent overspeeding on gradients.
Park brake	Disc type, spring applied, automatic hydraulic release.
Gradeability	70% (35 deg) continuous.
Travel speed	High – 5 km/h (3 mph). Mid – 3.4 km/h (2.1 mph). Low – 2.4 km/h (1.5 mph).
Tractive effort	244kN (24900kgf, 54904lbf).

CAB

Excellent digging, loading and positioning visibility results from the careful design of front, side and roof lights. All screens are tinted to improve in cab conditions.

Fully opening front screen is very smooth to operate and as the lower screen is stored within the top screen frame it makes complete front screen opening easy, fast and convenient.

Fresh air ventilation available from opening door window, opening slot in front screen and fully opening front screen.

Parallelogram wash wiper for upper screen ensuring good wiped area for maximum visibility. Wiper motor is fitted in the left hand side of the roof screen so as not to affect bucket visibility when loading. Optional lower screen wiper available.

Fresh air ventilation and heater with windscreen demister. Infinitely variable blower speed, temperature and recirculation control. Air conditioning or climate control incorporating chilled cool box available as option. Fully adjustable deluxe suspension seat with arm rest adjustment and backrest recline. Radio cassette player with digital tuner fitted into the roof lining for maximum protection. Conveniently placed radio mute button incorporated into lower console. 12v power point and mobile phone holder built into the right hand console. Courtesy light can be operated from ground level and is illuminated for five minutes or until switched off improving operator access at night. Cab mounted roller blind protects operator from suns' glare through front or top screens.

AMS – ADVANCED MANAGEMENT SYSTEM

Four selectable working modes link the operators control movements with the engine and hydraulic systems to maximise productivity and efficiency.

A (Auto)

Up to 100% engine power and 100% flow. Gives variable power and speed depending on the operator's input, matching the demand for output and efficiency to the job. Power boost is automatically activated in this mode should hard conditions be encountered. Auto idle cuts in after a period of inactivity (between 5 and 30 seconds as set by the operator)

E (Economy)

80% engine power. 95% of hydraulic flow maximises economy while maintaining excellent output.

P (Precision)

55% engine power. 90% of hydraulic flow for fine control of grading operations.

L (Lifting)

55% engine power. 63% of hydraulic flow with permanent power boost for maximum lifting power and control.

The Auto mode allows the AMS processor to select the optimum operational performance to match the demands of the job while the three alternative modes give precise matching of application when specific tasks are undertaken.

The adjustable position monitor mounted on the front right hand pillar of the cab gives the operator a constant read out of mode, tracking range, operating temperature and a host of other information, while retaining excellent visibility of the monitor and the job being carried out.

The required flow for hammer applications can be set and stored in the AMS memory and is automatically activated whenever the hammer pedal is depressed.

A maintenance indicator warns of imminent service needs, and all servicing and basic checks can be carried out using only the in cab display.

CONTROLS

Excavator	All servo lever operated to ISO control pattern, independently adjustable to the seat.
Tracks	Individually servo operated by foot pedal or hand lever. Speed selection via joystick button.
Auxiliary	Via servo operated foot pedal.
Control isolation	Via gate lock lever at cab entrance or panel switch.
Engine speed	Dial type throttle control plus servo lever mounted one-touch idle control or separate selectable auto-idle with adjustable time delay using AMS.
Engine stop	Ignition key operated and separate shut-down button.
Horn	Operated via servo lever mounted button.



STANDARD EXCAVATING BUCKETS

Standard excavating buckets are fully welded, heavy-duty steel with hardened and sealed pivot pins.

Boom length: 6.45m (21ft 2in)							
Bucket width mm (in)	900 (35)	1000 (39)	1200 (47)	1350 (53)	1500 (59)	1600 (63)	1800 (71)
Bucket capacity m ³ (yd ³)	0.85 (1.11)	0.98 (1.28)	1.245 (1.63)	1.45 (1.9)	1.49 (1.95)	1.61 (2.1)	1.845 (2.41)
Bucket weight kg (lb)	921 (2030)	974 (2147)	1107 (2441)	1228 (2707)	1252 (2760)	1304 (2875)	1420 (3131)
Dipper length							
2.21m (7ft 3in)	○	○	○	○	○	○	○
2.63m (8ft 8in)	○	○	○	○	○	○	●
3.23m (10ft 7in)	○	○	○	○	●	●	●
4.03m (13ft 3in)	○	○	○	●	●	■	■
Boom length: 6.1m (20ft 0in)							
Bucket width	1800 (71)		1750 (70)		1750 (70)		
Bucket capacity m ³ (yd ³)	1.845 (2.41)		2.2 (2.88)		2.34 (3.06)		
Bucket weight kg (lb)	1420 (3131)		1790 (3946)		1850 (4079)		
Dipper length							
2.21m (7ft 3in)	○		●		●		
2.63m (8ft 8in)	○		■		■		

○ Material weight up to 1800kg/m³ (1.35t/yd³)

● Material weight up to 1500kg/m³ (1.1t/yd³)

■ Material weight up to 1200kg/m³ (0.90t/yd³)

These recommendations are given as a guide based on typical operating conditions.

Please contact your distributor for the correct selection of buckets and attachments to suit the application.

SERVICE CAPACITIES

	Litres	UK gal
Fuel tank	518	114
Engine coolant	38.0	8.4
Engine oil	38.0	8.4
Swing reduction gear	14.5	3.19
track reduction gear (each side)	8.5	1.87
Hydraulic system	320.0	70.4
Hydraulic tank	152.0	33.4

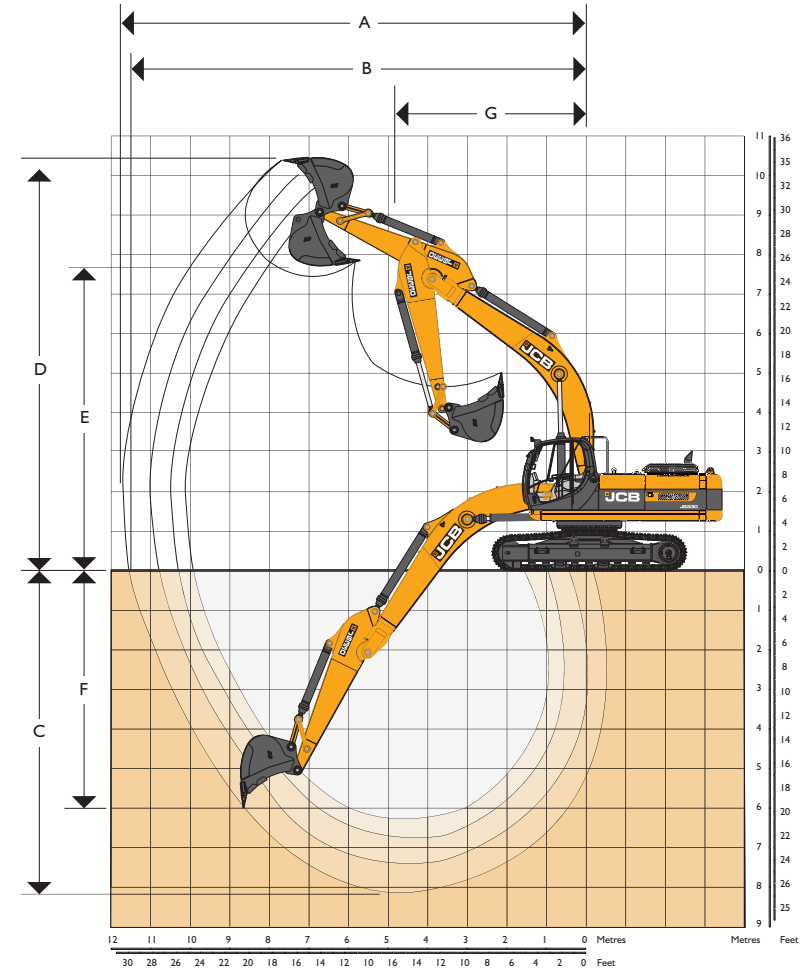
WEIGHTS

Equipped with 6.45m (21ft 2in.) boom, 3.23m (10ft 7in) arm, standard bucket, operator and full fuel tank, 6300kg (13230lb) counterweight.

JS330 NLC		
Shoe Width	Operating Weight	Ground Bearing Pressure
600mm (24in)	32089kg (70744lb)	0.64kgf/sq.cm (9.11bf/sq.in)
700mm (28in)	32489kg (71626lb)	0.55kgf/sq.cm (7.91bf/sq.in)
800mm (31in)	32889kg (72507lb)	0.49kgf/sq.cm (7.01bf/sq.in)
900mm (35in)	33289kg (73389lb)	0.44kgf/sq.cm (6.31bf/sq.in)
JS330 LC		
600mm (24in)	32229kg (71052lb)	0.64kgf/sq.cm (9.11bf/sq.in)
700mm (28in)	32629kg (71934lb)	0.56kgf/sq.cm (7.91bf/sq.in)
800mm (31in)	33029kg (72816lb)	0.49kgf/sq.cm (7.01bf/sq.in)
900mm (35in)	33429kg (73698lb)	0.44kgf/sq.cm (6.31bf/sq.in)

WORKING RANGE

Boom length: 6.45m (21ft 2in)		
Dipper length	2.21m (7ft 3in)	2.63m (8ft 8in)
A Maximum digging reach	10170mm (33ft 4in)	10570mm (34ft 8in)
B Maximum reach on ground	9960mm (32ft 8in.)	10370mm (34ft 0in)
C Maximum digging depth	6370mm (20ft 11in)	6800mm (22ft 4in)
D Maximum digging height	9740mm (31ft 11in)	9980mm (32ft 9in)
E Maximum dumping height	6710mm (22ft 0in)	6910mm (22ft 8in)
F Maximum vertical cut depth	5020mm (16ft 6in)	5610mm (18ft 5in)
G Minimum swing radius	4670mm (15ft 3in)	4640mm (15ft 3in)
Bucket rotation	184.5°	184.5°
Dipper tearout	kgf (lbf) 18300 (40350)	16100 (35500)
Dipper tearout with boost	kgf (lbf) 20284 (44719)	17765 (39165)
Bucket tearout	17900 (39470)	17900 (39470)
Bucket tearout with boost	kgf (lbf) 19500 (43000)	19500 (43000)
Boom length: 6.45m (21ft 2in)		
Dipper length	3.23m (10ft 7in)	4.03m (13ft 3in)
A Maximum digging reach	11130mm (36ft 6in)	11860mm (38ft 11in)
B Maximum reach on ground	10940mm (35ft 11in)	11680mm (38ft 4in)
C Maximum digging depth	7390mm (24ft 3in)	8190mm (26ft 11in)
D Maximum digging height	10280mm (33ft 8in)	10550mm (34ft 7in)
E Maximum dumping height	7190mm (23ft 7in)	7460mm (24ft 6in)
F Maximum vertical cut depth	6340mm (20ft 10in)	7120mm (23ft 4in)
G Minimum swing radius	4510mm (14ft 10in)	4520mm (14ft 10in)
Bucket rotation	184.5°	184.5°
Dipper tearout with boost	kgf (lbf) 14805 (32639)	12875 (28385)
Bucket tearout with boost	kgf (lbf) 19500 (43000)	19500 (43000)
ME Boom – Boom length: 6.10m (20ft 0in)		
Dipper length	2.21m (7ft 3in)	2.63m (8ft 8in)
A Maximum digging reach	9782mm (32ft 1in)	10190mm (33ft 5in)
B Maximum reach on ground	9566mm (31ft 5in)	9984mm (32ft 9in)
C Maximum digging depth	5960mm (19ft 7in)	6387mm (20ft 11in)
D Maximum digging height	9450mm (31ft 0in)	9722mm (31ft 11in)
E Maximum dumping height	6662mm (21ft 10in)	6898mm (22ft 8in)
F Maximum vertical cut depth	3097mm (10ft 2in)	3690mm (12ft 1in)
G Minimum swing radius	4350mm (14ft 3in)	4347mm (14ft 3in)
Bucket rotation	184.5°	184.5°
Dipper tearout with boost	kgf (lbf) 20284 (44719)	17765 (39165)
Bucket tearout with boost	kgf (lbf) 19500 (43000)	19500 (43000)



LIFT CAPACITIES – Dipper length: 2.21m, Boom: 6.45m, Trackshoes: 600mm triple grouser.

JS330 LC MONO

Load Point	Reach from Swing Centre												Max. Reach		
	1.5m (4ft 11in)		3m (9ft 10in)		4.5m (14ft 9in)		6m (19ft 8in)		7.5m (24ft 7in)		9m (29ft 6in)		kg	kg	mm
Ht.	kg	kg	kg	kg	kg	kg	kg	kg	kg	kg	kg	kg	kg	kg	mm
7.5m (24.7ft)							8640*	8640*					8580*	8100	6491
6m (19.8ft)							8960*	8960*	8240*	6310			8240*	6270	7523
4.5m (14.9ft)					12990*	12990*	9900*	8640	8470*	6170			7970	5390	8151
3m (9.10ft)							11000*	8150	8880	5940			7370	4950	8467
1.5m (4.11ft)							11760*	7770	8650	5730			7200	4810	8506
0m					15700*	11470	11840	7580	8520	5610			7420	4930	8273
- 1.5m (- 4.11ft)					14560*	11530	11340*	7550	8520	5610			8160	5390	7741
- 3m (- 9.10ft)			14810*	14810*	12550*	11730	9820	7690					8190*	6480	6842
- 4.5m (- 14.9ft)					8820*	8820*							7170*	7170*	5388
- 6m (- 19.8ft)															

LIFT CAPACITIES – Dipper length: 2.63m, Boom: 6.45m, Trackshoes: 600mm triple grouser.

JS330 LC MONO

Load Point	Reach from Swing Centre												Max. Reach		
	1.5m (4ft 11in)		3m (9ft 10in)		4.5m (14ft 9in)		6m (19ft 8in)		7.5m (24ft 7in)		9m (29ft 6in)		kg	kg	mm
Ht.	kg	kg	kg	kg	kg	kg	kg	kg	kg	kg	kg	kg	kg	kg	mm
7.5m (24.7ft)													7960*	7230	7008
6m (19.8ft)							8530*	8530*	7810*	6430			7720*	5770	7972
4.5m (14.9ft)					12240*	12240*	9520*	8800	8180*	6250			7420	5030	8567
3m (9.10ft)					14820*	12400	10690*	8290	8730*	6010			6910	4650	8867
1.5m (4.11ft)					14130*	11680	11600*	7870	8710	5780			6760	4520	8905
0m					16070*	11460	11890	7620	8540	5630			6940	4620	8682
- 1.5m (- 4.11ft)			11800*	11800*	15140*	11480	11580*	7550	8490	5590			7540	5000	8178
- 3m (- 9.10ft)			16800*	16800*	13380*	11650	10390*	7640					7950*	5860	7334
- 4.5m (- 14.9ft)			12540*	12540*	10220*	10220*	7380*	7380*					7370*	7370*	6004
- 6m (- 19.8ft)															

Lift capacity front and rear.

Lift capacity full circle.

- Notes:**
- Lifting capacities are based on ISO 10567, that is: 75% of minimum tipping load or 87% of hydraulic lift capacity, whichever is the less. Lifting capacities marked* are based on hydraulic capacity.
 - Lift capacities assume that the machine is on firm, level ground.
 - Lift capacities may be limited by local regulations. Please refer to your dealer.

LIFT CAPACITIES – Dipper length: 3.23m, Boom: 6.45m, Trackshoes: 600mm triple grouser.

JS330 LC MONO

Load Point	Reach from Swing Centre														
	1.5m (4ft 11in)		3m (9ft 10in)		4.5m (14ft 9in)		6m (19ft 8in)		7.5m (24ft 7in)		9m (29ft 6in)		Max. Reach		
Ht.	kg	kg	kg	kg	kg	kg	kg	kg	kg	kg	kg	kg	kg	kg	mm
7.5m (24.7ft)									6740*	6580			5540*	5540*	7713
6m (19.8ft)									7210*	6530			5350*	5140	8597
4.5m (14.9ft)							8830*	8830*	7680*	6320	6540*	4680	5350*	4540	9150
3m (9.10ft)					13720*	12750	10100*	8390	8320*	6040	6770	4560	5530*	4220	9432
1.5m (4.11ft)					15630*	11850	11190*	7910	8710	5780	6630	4430	5890*	4100	9467
0m					16160*	11450	11780*	7600	8500	5590	6530	4340	6270	4170	9258
- 1.5m (- 4.11ft)			11700*	11700*	15650*	11350	11720	7470	8400	5500			6730	4460	8788
- 3m (- 9.10ft)			18510*	18510*	14270*	11450	10900*	7490	8380*	5530			7510*	5090	8009
- 4.5m (- 14.9ft)			15240*	15240*	11720*	11720*	8880*	7690					7270*	6500	6815
- 6m (- 19.8ft)															

LIFT CAPACITIES – Dipper length: 4.03m, Boom: 6.45m, Trackshoes: 600mm triple grouser.

JS330 LC MONO

Load Point	Reach from Swing Centre														
	1.5m (4ft 11in)		3m (9ft 10in)		4.5m (14ft 9in)		6m (19ft 8in)		7.5m (24ft 7in)		9m (29ft 6in)		Max. Reach		
Ht.	kg	kg	kg	kg	kg	kg	kg	kg	kg	kg	kg	kg	kg	kg	mm
9m (29.6ft)													4890*	4890*	7396
7.5m (24.7ft)													4550*	4550*	8586
6m (19.8ft)									6520*	6520*	5990*	4930	4430*	4430*	9387
4.5m (14.9ft)									7080*	6520	6550*	4830	4450*	4080	9895
3m (9.10ft)					12310*	12310*	9350*	8710	7820*	6220	6900	4680	4590*	3820	10156
1.5m (4.11ft)					14730*	12320	10650*	8160	8550*	5930	6730	4510	4870*	3710	10189
0m			7390*	7390*	15970*	11670	11540*	7760	8610	5680	6580	4380	5330*	3750	9995
- 1.5m (- 4.11ft)	7330*	7330*	11080*	11080*	16080*	11400	11800	7530	8440	5530	6490	4300	5960	3960	9562
- 3m (- 9.10ft)	11460*	11460*	15900*	15900*	15250*	11390	11440*	7460	8390	5480			6660	4410	8853
- 4.5m (- 14.9ft)	16330*	16330*	18410*	18410*	13390*	11560	10150*	7560	7600*	5590			7070*	5330	7792
- 6m (- 19.8ft)			13160*	13160*	9900*	9900*	7070*	7070*					6650*	6650*	6196

Lift capacity front and rear.

Lift capacity full circle.

- Notes:**
- Lifting capacities are based on ISO 10567, that is: 75% of minimum tipping load or 87% of hydraulic lift capacity, whichever is the less. Lifting capacities marked* are based on hydraulic capacity.
 - Lift capacities assume that the machine is on firm, level ground.
 - Lift capacities may be limited by local regulations. Please refer to your dealer.

LIFT CAPACITIES – Dipper length: 2.21m, Boom: 6.45m, Trackshoes: 600mm triple grouser.

JS330 NLC MONO

Load Point	Reach from Swing Centre												Max. Reach		
	1.5m (4ft 11in)		3m (9ft 10in)		4.5m (14ft 9in)		6m (19ft 8in)		7.5m (24ft 7in)		9m (29ft 6in)				
Ht.	kg	kg	kg	kg	kg	kg	kg	kg	kg	kg	kg	kg	kg	kg	mm
7.5m (24.7ft)							8640*	8520					8580*	7440	6491
6m (19.8ft)							8960*	8320	8240	5790			8240	5750	7523
4.5m (14.9ft)					12990*	11990	9900*	7900	8470*	5650			7940	4930	8151
3m (9.10ft)							11000*	7420	8840	5420			7340	4520	8467
1.5m (4.11ft)							11760*	7050	8620	5220			7170	4380	8506
0m					15700*	10290	11790	6860	8480	5100			7390	4490	8273
- 1.5m (- 4.11ft)					14560*	10350	11340*	6840	8480	5100			8120	4910	7741
- 3m (- 9.10ft)			14810*	14810*	12550*	10550	9820*	6970					8190*	5890	6842
- 4.5m (- 14.9ft)					8820*	8820*							7170*	7170*	5388
- 6m (- 19.8ft)															

LIFT CAPACITIES – Dipper length: 2.63m, Boom: 6.45m, Trackshoes: 600mm triple grouser.

JS330 NLC MONO

Load Point	Reach from Swing Centre												Max. Reach		
	1.5m (4ft 11in)		3m (9ft 10in)		4.5m (14ft 9in)		6m (19ft 8in)		7.5m (24ft 7in)		9m (29ft 6in)				
Ht.	kg	kg	kg	kg	kg	kg	kg	kg	kg	kg	kg	kg	kg	kg	mm
7.5m (24.7ft)													7960*	6650	7008
6m (19.8ft)							8530*	8480	7810*	5900			7720*	5300	7972
4.5m (14.9ft)					12240*	12240*	9520*	8050	8180*	5730			7390	4600	8567
3m (9.10ft)					14820*	11190	10690*	7560	8730*	5500			6880	4250	8867
1.5m (4.11ft)					14130*	10490	11600*	7150	8680	5270			6730	4120	8905
0m					16070*	10280	11840	6910	8510	5120			6910	4200	8682
- 1.5m (- 4.11ft)			11800*	11800*	15140*	10300	11580*	6840	8460	5080			7500	4550	8178
- 3m (- 9.10ft)			16800*	16800*	13380*	10470	10390*	6920					7950*	5340	7334
- 4.5m (- 14.9ft)			12540*	12540*	10220*	10220*	7380*	7240					7370*	7240	6004
- 6m (- 19.8ft)															

Lift capacity front and rear.

Lift capacity full circle.

- Notes:**
- Lifting capacities are based on ISO 10567, that is: 75% of minimum tipping load or 87% of hydraulic lift capacity, whichever is the less. Lifting capacities marked* are based on hydraulic capacity.
 - Lift capacities assume that the machine is on firm, level ground.
 - Lift capacities may be limited by local regulations. Please refer to your dealer.

LIFT CAPACITIES – Dipper length: 3.23m, Boom: 6.45m, Trackshoes: 600mm triple grouser.

JS330 NLC MONO

Load Point	Reach from Swing Centre														
	1.5m (4ft 11in)		3m (9ft 10in)		4.5m (14ft 9in)		6m (19ft 8in)		7.5m (24ft 7in)		9m (29ft 6in)		Max. Reach		
Ht.	kg	kg	kg	kg	kg	kg	kg	kg	kg	kg	kg	kg	kg	kg	mm
7.5m (24.7ft)									6740*	6060			5540*	5540*	7713
6m (19.8ft)									7210*	6000			5350*	4720	8597
4.5m (14.9ft)							8830*	8180	7680*	5790	6540*	4280	5350*	4150	9150
3m (9.10ft)					13720*	11530	10100*	7650	8320*	5520	6740	4160	5530*	3850	9432
1.5m (4.11ft)					15630*	10650	11190*	7190	8680	5270	6600	4040	5890*	3730	9467
0m					16160*	10270	11780*	6880	8460	5080	6500	3940	6420	3790	9258
- 1.5m (- 4.11ft)			11700*	11700*	15650*	10180	11670	6750	8360	4990			6700	4050	8788
- 3m (- 9.10ft)			18510*	18510*	14270*	10270	10900*	6770	8380*	5020			7510*	4630	8009
- 4.5m (- 14.9ft)			15240*	15240*	11720*	10540	8880*	6970					7270*	5910	6815
- 6m (- 19.8ft)															

LIFT CAPACITIES – Dipper length: 4.03m, Boom: 6.45m, Trackshoes: 600mm triple grouser.

JS330 NLC MONO

Load Point	Reach from Swing Centre														
	1.5m (4ft 11in)		3m (9ft 10in)		4.5m (14ft 9in)		6m (19ft 8in)		7.5m (24ft 7in)		9m (29ft 6in)		Max. Reach		
Ht.	kg	kg	kg	kg	kg	kg	kg	kg	kg	kg	kg	kg	kg	kg	mm
9m (29.6ft)													4890*	4890*	7396
7.5m (24.7ft)													4550*	4550*	8586
6m (19.8ft)									6520*	6220	5990*	4520	4430*	4170	9387
4.5m (14.9ft)									7080*	5990	6550*	4430	4450*	3730	9895
3m (9.10ft)					12310*	12180	9350*	7960	7820*	5700	6880	4280	4590*	3480	10156
1.5m (4.11ft)					14730*	11110	10650*	7430	8550*	5410	6700	4120	4870*	3380	10189
0m			7390*	7390*	15970*	10480	11540*	7030	8570	5170	6550	3980	5330*	3410	9995
- 1.5m (- 4.11ft)	7330*	7330*	11080*	11080*	16080*	10220	11750	6810	8400	5020	6460	3900	5940	3590	9562
- 3m (- 9.10ft)	11460*	11460*	15900*	15900*	15250*	10210	11440*	6750	8360	4980			6630	4000	8853
- 4.5m (- 14.9ft)	16330*	16330*	18410*	18410*	13390*	10380	10150*	6840	7600*	5080			7070*	4850	7792
- 6m (- 19.8ft)			13160*	13160*	9900*	9900*	7070*	7070*					6650*	6650*	6196

Lift capacity front and rear.

Lift capacity full circle.

- Notes:**
- Lifting capacities are based on ISO 10567, that is: 75% of minimum tipping load or 87% of hydraulic lift capacity, whichever is the less. Lifting capacities marked* are based on hydraulic capacity.
 - Lift capacities assume that the machine is on firm, level ground.
 - Lift capacities may be limited by local regulations. Please refer to your dealer.

LIFT CAPACITIES – Dipper length: 2.21m, Boom: 6.1m, Trackshoes: 600mm triple grouser.

JS330 LC ME

Load Point	Reach from Swing Centre												Max. Reach	
	1.5m (4ft 11in)		3m (9ft 10in)		4.5m (14ft 9in)		6m (19ft 8in)		7.5m (24ft 7in)		9m (29ft 6in)		kg	mm
Ht.	kg	kg	kg	kg	kg	kg	kg	kg	kg	kg	kg	kg	kg	mm
7.5m (24.7ft)							9290*	9230					9300*	6073
6m (19.8ft)							9310*	9140					8830*	7166
4.5m (14.9ft)					12920*	12920*	10140*	8780	8830*	6230			8580	7824
3m (9.10ft)							11190*	8340	8990	6050			7900	8152
1.5m (4.11ft)							11960*	7980	8790	5860			7720	8193
0m					16160*	11740	12050	7780	8670	5760			7990	7950
- 1.5m (- 4.11ft)			15470*	15470*	14880*	11780	11430*	7750					8760*	7396
- 3m (- 9.10ft)			15210*	15210*		12500	11990	9470*	7910				8400	6447
- 4.5m (- 14.9ft)														
- 6m (- 19.8ft)														

LIFT CAPACITIES – Dipper length: 2.63m, Boom: 6.1m, Trackshoes: 600mm triple grouser.

JS330 LC ME

Load Point	Reach from Swing Centre												Max. Reach	
	1.5m (4ft 11in)		3m (9ft 10in)		4.5m (14ft 9in)		6m (19ft 8in)		7.5m (24ft 7in)		9m (29ft 6in)		kg	mm
Ht.	kg	kg	kg	kg	kg	kg	kg	kg	kg	kg	kg	kg	kg	mm
7.5m (24.7ft)							8580*	8580*					7710*	6615
6m (19.8ft)							8830*	8830*	8270*	6430			7310*	7630
4.5m (14.9ft)					12190*	12190*	9730*	8930	8500*	6320			7270*	8250
3m (9.10ft)					14740*	12820	10880*	8470	8990*	6120			7370	8562
1.5m (4.11ft)					16310*	12060	11800*	8070	8840	5910			7210	8601
0m					16420*	11770	12110	7820	8690	5770			7430	8370
- 1.5m (- 4.11ft)			14940*	14940*	15460*	11750	11720*	7750	8660	5740			8140	7846
- 3m (- 9.10ft)			17220*	17220*	13430*	11920	10230*	7850					8180*	6960
- 4.5m (- 14.9ft)					9520*	9520*							7220*	5538
- 6m (- 19.8ft)														

Lift capacity front and rear.

Lift capacity full circle.

- Notes:**
1. The above loads are in compliance with SAE and ISO Hydraulic Excavator Lift Capacity Standards.
 2. They do not exceed 87% of hydraulic lifting capacity or 75% of tipping load.
 3. Rated loads marked with an asterisk (*) are limited by hydraulic capacity rather than tipping load.

LIFT CAPACITIES – Dipper length: 2.21m, Boom: 6.1m, Trackshoes: 600mm triple grouser.

JS330 NLC ME

Load Point	Reach from Swing Centre												Max. Reach		
	1.5m (4ft 11in)		3m (9ft 10in)		4.5m (14ft 9in)		6m (19ft 8in)		7.5m (24ft 7in)		9m (29ft 6in)				
Ht.	kg	kg	kg	kg	kg	kg	kg	kg	kg	kg	kg	kg	kg	kg	mm
7.5m (24.7ft)							9290*	8480					9300*	8300	6073
6m (19.8ft)							9310*	8400					8830*	6270	7166
4.5m (14.9ft)					12920*	12330	10140*	8830*	5720				8540	5330	7824
3m (9.10ft)							11190*	7610	8950	5530			7870	4880	8152
1.5m (4.11ft)							11960*	7250	8750	5350			7690	4730	8193
0m					16160*	10550	12000	7060	8630	5250			7690	4870	7950
- 1.5m (- 4.11ft)			15470*	15470*	14880*	10600	11430*	7030					8760*	5370	7396
- 3m (- 9.10ft)			15210*	15210*	12500*	10800	9470	7190					8400*	6570	6447
- 4.5m (- 14.9ft)															
- 6m (- 19.8ft)															

LIFT CAPACITIES – Dipper length: 2.63m, Boom: 6.1m, Trackshoes: 600mm triple grouser.

JS330 NLC ME

Load Point	Reach from Swing Centre												Max. Reach		
	1.5m (4ft 11in)		3m (9ft 10in)		4.5m (14ft 9in)		6m (19ft 8in)		7.5m (24ft 7in)		9m (29ft 6in)				
Ht.	kg	kg	kg	kg	kg	kg	kg	kg	kg	kg	kg	kg	kg	kg	mm
7.5m (24.7ft)							8580*	8580*					7710*	7310	6615
6m (19.8ft)							8830*	8540	8270*	5910			7310*	5730	7630
4.5m (14.9ft)					12190*	12190*	9730*	8190	8500*	5800			7270*	4950	8250
3m (9.10ft)					14740*	11600	10880*	7740	8990*	5600			7340	4560	8562
1.5m (4.11ft)					16310*	10860	11800*	7340	8810	5400			7180	4430	8601
0m					16420*	10580	12060	7100	8650	5260			7400	4540	8370
- 1.5m (- 4.11ft)			14940*	14940*	15460*	10570	11720*	7030	8620	5230			8110	4950	7846
- 3m (- 9.10ft)			17220*	17220*	13430*	10730	10230*	7130					8180*	5890	6960
- 4.5m (- 14.9ft)					9520*	9520*							7220*	7220*	5538
- 6m (- 19.8ft)															

Lift capacity front and rear.

Lift capacity full circle.

- Notes:**
1. The above loads are in compliance with SAE and ISO Hydraulic Excavator Lift Capacity Standards.
 2. They do not exceed 87% of hydraulic lifting capacity or 75% of tipping load.
 3. Rated loads marked with an asterisk (*) are limited by hydraulic capacity rather than tipping load.



A GLOBAL COMMITMENT TO QUALITY

JCB's total commitment to its products and customers has helped it grow from a one-man business into Britain's largest privately owned manufacturer of backhoe loaders, crawler excavators, wheeled excavators, telescopic handlers, wheeled loaders, dump trucks, rough terrain fork lifts, industrial fork lifts, mini/midi excavators, skid steer loaders and tractors.

By making constant and massive investments in the latest production technology, the JCB factories have become some of the most advanced in Europe.

By leading the field in innovative research and design, extensive testing and stringent quality control, JCB machines have become renowned all over the world for performance, value and reliability.

And with a global sales and service network of over 400 distributors and agents, the company exports over 70% of its production to all five continents.

Through setting the standards by which others are judged, JCB has become one of Britain's most impressive success stories.

